

SEPTEMBER 2024

MUNI FACULTY OF SOCIAL STUDIES

Monthly
Newsletter for
International
Students



IN THIS NEWSLETTER

Orientation Week

Faculty Introduction
Faculty tour

Enrollment period

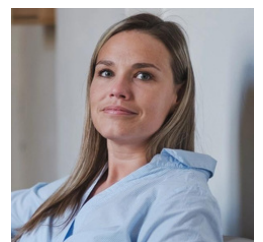
ISIC cards

FSS BBQ

28 September
St. Wenceslas Day
Day of Czech Statehood

WELCOME BY

PETRA MLEJNKOVÁ



As the new vice-dean for internationalization, I want to express my heartfelt wishes for your success during your time with us. Your presence enriches our faculty with different perspectives, cultures, and talents, and we are committed to ensuring that your academic journey here is not only rewarding but also personally fulfilling.

I want to assure you that we are here for you, and our doors are always open. While we encourage you to explore new horizons and engage in extracurricular activities, meeting your academic obligations is equally crucial. Our dedicated faculty and staff are here to assist you in achieving your educational goals, but success ultimately depends on your commitment and effort.

Have a successful and inspiring autumn semester 2024!

ORIENTATION WEEK

The Autumn Semester is here, and this time around students will actually be able to attend Orientation Week in Person. Orientation week will take place from **8th till 13th of September**.

Here's what's in store for the newcomers this year:

Compulsory Activities- starting on Monday 9 September at 11:30 at the Faculty of Economics, Lipová 41a

- Admission
- Online Orientation
- Introduction to Faculties
- Learning Agreement seminar (for Erasmus+ students)

Free For Everyone

- Second-hand Shop
- Student Activities Fair
- Sustainable Living Workshop a Chill out Day

Activities for the OW Package Buyers:

- Pub Crawl & Café Crawl
- Brno City Tour
- Priority at Second-hand Shop
- Free entry vouchers + discounts
- MU gifts
- ESN Welcome Party
- Karaoke

Paid Activities for non-buyers of Orientation week

- International dinner – free if you bring your national dish

Survival Czech

- Special offer outside the OW Package, only for those who buy the course
- See more information [here](#)

All new students should register to receive their individual schedule for the activities.

FACULTY INTRODUCTION

**Wednesday , 11 September-
Erasmus/exchange students**

**Friday, 20 September - full degree
students**

First year students are welcome to participate in our faculty introduction to get to know a little more about FSS, and how to get around the building.

There will be two sessions, one for **exchange/Erasmus students on 11 September 2024 at 10:00 at P31 in the FSS building**.
one for **full degree students on Friday 20 September 2024 at 10:00 at P52 in the FSS building**.

Due to the FSS building reconstruction, the **faculty tour** will start **on Friday 20 September 2024 at 10:00 in front of the building for Erasmus/Exchange students** and **around from 11:00 for full degree students** after the faculty introduction.

Social Media

Faculty Social Media:

 [fss.muni.eng](https://www.facebook.com/fss.muni.eng)

 [fss_masaryk](https://www.instagram.com/fss_masaryk)

 [MUFSS](https://www.youtube.com/MUFSS)

 [MUNI_FSS](https://twitter.com/MUNI_FSS)

University Social Media:

 [fss.muni.eng](https://www.facebook.com/fss.muni.eng)

 [masaryk_university](https://www.instagram.com/masaryk_university)

 [MasarykUniversity](https://www.youtube.com/MasarykUniversity)

 [MasarykUni](https://twitter.com/MasarykUni)

REMINDER: ENROLL AND REGISTER FOR THE SEMESTER AND COURSES

Course enrollment is from 26 August to 15 September and changes to your courses can take place between 16 - 29 September 2024. Changes cannot take place after this date.

Quick Reminder - Registration and Enrollment are separate actions

- Registration: The registration period determines the interest of students in courses. Students can obtain better time stamps for capacity-limited courses.
- Enrollment: During this period there is an automatic enrollment / confirmation of subjects for which enrollment conditions have been met (capacity, prerequisites, etc.). Only at the moment of enrollment do you acquire the right and obligation to study the course.

ISIC CARDS

Renewing and purchasing.

Returning students are required to extend the validity of the MU ISIC card online via digital revalidation. You can make an application at MU [Shopping center](#), where you will also find the current price for extending your card validity. It is called "[Digitální revalidace karty ISIC pro rok 2024/2025](#)" and it costs 250 CZK. The validity of your digital card will automatically change in the Alive App after successful payment and registration in the database. The ISIC licence on your plastic card will not be visibly extended. You can continue to use your plastic card within the university.



New students will take their [photo](#) during orientation week, however they would have needed to purchase the ISIC card for 250 CZK, it is called "[Průkaz ISIC – první průkaz \(prezenční studium\) na Fakultě sociálních studií](#)"

Exchange/Erasmus students received a link from Dagmar Hábová and please take into consideration that the price for Exchange students is 450 CZK.

PRIOR DEGREE RECOGNITION

Required for all NEW Full Degree Students

According to Czech law, all full degree students must have their prior degrees recognized in order to study in a degree program in the Czech Republic. FSS students can submit this recognition to Ludmila Polášková when they arrive, however they should be sure to have all the necessary paperwork with them from their home country.

To view the required documents, please visit our website [here](#).

FACULTY EVENTS



20 September - faculty tour for new students

The faculty tour will be held on 20 September 2024 divided into 2 groups:

- Erasmus and Exchange students, meeting point in front of the faculty at 10:00 a.m.
- Full degree students - meeting point at P52 after the faculty presentation

17 September 2024- Graduation Ceremony

Bachelor's and Master's Graduation Ceremony will take place on 17 September 2024 at 9:00.



19 October - Open day

We cordially invite you to our upcoming Open Day on Saturday, October 19, 2024.

Registration starts on September 5 at 3:00 pm. This event is tailored for all prospective students interested in pursuing their academic journey at our faculty. Discover our campus, acquire essential insights into our diverse study programs, admission procedures, and the academic experience. Be sure not to miss the guided tour of the FSS MU Library.

FSS BBQ

2 October 4 pm- save the date

We are excited to once again host an international student BBQ at Špilberk Park. Join your fellow students and professors in this social outing. Confirmation of the date and time will be done during next week, registration form will be sent as well.



MATRICULATION

3 October

All first year bachelor's students are invited to participate in the matriculation ceremony. This symbolic ceremony welcomes you into the faculty, and brings you together with the incoming bachelor's class that will be graduating in 2027.

FALL 2024

FSS International Student Social Activities

- **BBQ: save the date** -Wednesday 2 October 4pm, will be confirmed
- **Hike- Saturday 12 October**, will be confirmed in October
- **Czech Christmas Celebration:** will be determined in November

28 SEPTEMBER

St. Wenceslas Day (Czech Statehood Day)

On 28 September the country celebrates Czech Statehood day. St. Wenceslas is the patron saint of Bohemia and this day is considered Czech Statehood Day.

Stores larger than 200m² are required to be closed on this day.

Library Hours



1-15 September-closed due to the reconstruction

From 16-20 September

MON-THU → 9 a.m.– 6 p.m.

FRI → 9 a.m. – 5 p.m.

SAT (21 September) → closed

From 23 September - standard opening hours

SAT (28 September) → closed due to public holiday

For more information, visit the [library website](#)

LANGUAGE AND SPORTS CLASSES

Open to FSS Full degree and exchange students

Students can enroll in the Physical Education courses offered by University Sports Centre and take classes such as Zumba, Table Tennis, Football, etc. To see the full list of courses, visit the FSpS [website](#). The bachelor students have to gain 2 ECTS during their whole studies.

Full degree students are also able to enroll in free French and Spanish introductory language courses taught in English and a **Czech language course for free**. Other [language courses](#) are offered at the Language Centre in Italian, Chinese, Swahili, German, and Czech, however there is a fee for these courses.



BRNO EVENTS

5 September - Mint Market

Join the the ultimate style experience at Mint Market on September 5th, celebrating the new season at the National Theater Brno. Explore fashion, jewelry, design, gourmet treats, and beauty products from emerging talents. Enjoy a lively opening concert at 11:00 AM on the Janáček Theater terrace, and it's all FREE



12 September - Ahoy Brno newcomers meeting

Join a welcome evening for international people in Brno! Get tips on settling in, learn how the Brno Expat Centre can support you, and meet fellow students. After a short presentation, enjoy a guided city tour and an optional pub meetup for more networking. The event is free, but spaces are limited—register now to reserve your spot!

15 September- Day of national minorities in Lužánky park

Discover international cuisine, customs, music, and dances of various nationalities in Brno at Lužánky Park on September 15th, starting at 11:00 PM. The event, part of Babylonfest, features performances, concerts, and activities, including Grupo Latinsky. Check the whole program here.



27- September-3 October The Architecture Day Festival

The Architecture Day Festival, from September 27 to October 3, offers free tours, walks, talks, and workshops exploring hidden places and Kafkaesque themes for Franz Kafka's 100th anniversary. Organized by Kruh, it coincides with the Film and Architecture Festival in Brno. Some events require registration. More info at www.denarchitektury.cz.



28- 29 September - Open Studios Days

Discover South Moravia's creativity during the Open Studios Days on 28- 29 September. Visit artists' studios, museums, and galleries for free. Explore diverse art forms, attend workshops, and enjoy exhibitions. Check the website www.d-o-a.cz for details or the [social media](#).

MEET THE INTERNATIONAL OFFICE STAFF



LUDMILA POLÁŠKOVÁ

Administration of tuition fees
and recognition of prior
education

email: lpolasko@fss.muni.cz
room 1.13



DAGMAR HÁBOVÁ

Erasmus Coordinator

email: habova@fss.muni.cz
room 1.14



MICHAELA NESPĚCHALOVÁ

admission office
non academic support
email: 63272@muni.cz
room 1.14



KLÁRA NĚMEČKOVÁ

admission officer and visa
questions

email: 217236@mail.muni.cz
room 1.14

Contact Hours - Ludmila

Monday: 13:00-15:00
Tuesday: 13:00-15:00
Wednesday: 9:00-11:00
Thursday: 9:00-11:00

Contact Hours - Klára & Dagmar & Michaela

Monday: 13:00-15:00
Tuesday: 13:00-15:00
Wednesday: 9:00-11:00
Thursday: 13:00-15:00
Friday: 9:00-11:00

MEET THE STUDY DEPARTMENT STAFF



KATEŘINA HERMANNOVÁ

Study support for full degree
Bachelor studies in English

Phone: +420 549 495 320
E-mail: hermannova@fss.muni.cz
room 1.21

- Confirmation of Studies
- Enrollment / Registration for courses
- Study Regulations
- Matriculation Ceremony

Contact Hours

Monday: 9:00-12:00 and 13:00-15:00
Tuesday: 9:00-12:00 and 13:00-15:00
Wednesday: 9:00-12:00 and 13:00-15:00
Thursday: 9:00-12:00 and 13:00-15:00



PAVLA PAVELKOVÁ

Study support for full degree
Master studies in English

Phone: +420 549 496 675
E-mail: pavelkova@fss.muni.cz
room 1.21

- Confirmation of Studies
- Enrollment / Registration for courses
- Study Regulations
- Graduation Ceremony

Contact Hours

Monday: 9:00-12:00 and 13:00-15:00
Tuesday: 9:00-12:00 and 13:00-15:00
Wednesday: 9:00-12:00 and 13:00-15:00
Thursday: 9:00-12:00 and 13:00-15:00

ERASMUS DEPARTMENTAL COORDINATORS

- Environmental Studies: Zbyněk Ulčák, Ph.D. (ulcak@fss.muni.cz)
- Media Studies and Journalism: Mgr. Martina Novotná, Ph.D. (mnovotna@fss.muni.cz)
- International Relations and European Studies: Mgr. Anežka Konvalinová (449212@muni.cz)
- Political Science: Mgr. Jan Kleiner (kleiner@fss.muni.cz)
- Psychology: Michal Čevelíček, Ph.D. (173055@muni.cz)
- Social Policy and Work: Mgr. Daniela Jaklová Střihavková, Ph.D. (djs@fss.muni.cz)
- Sociology: Csaba Szaló, Ph.D. (szalo@fss.muni.cz)